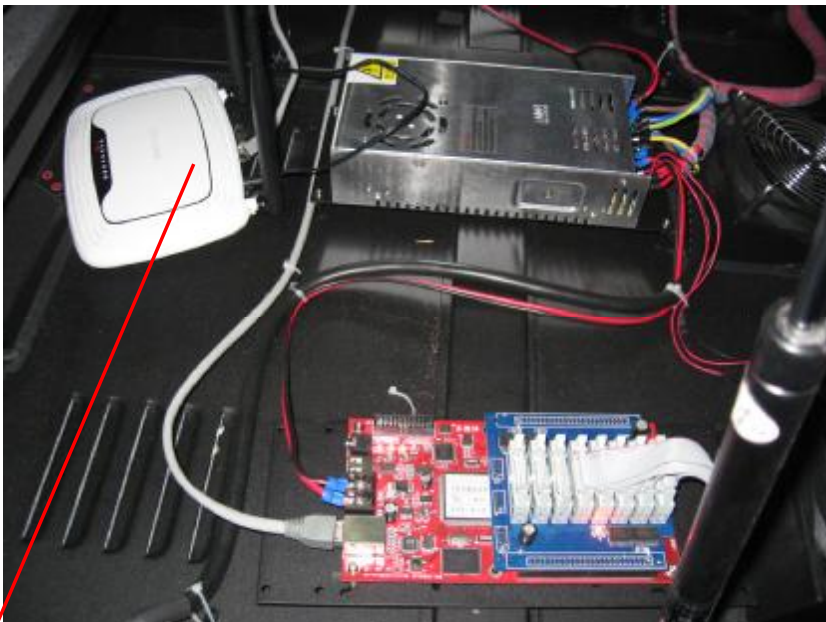


## Xixun Asynchronous Controlling system + Wireless router and wireless card

**Step 1:** Insert the wireless card in the PC



Wireless card in PC



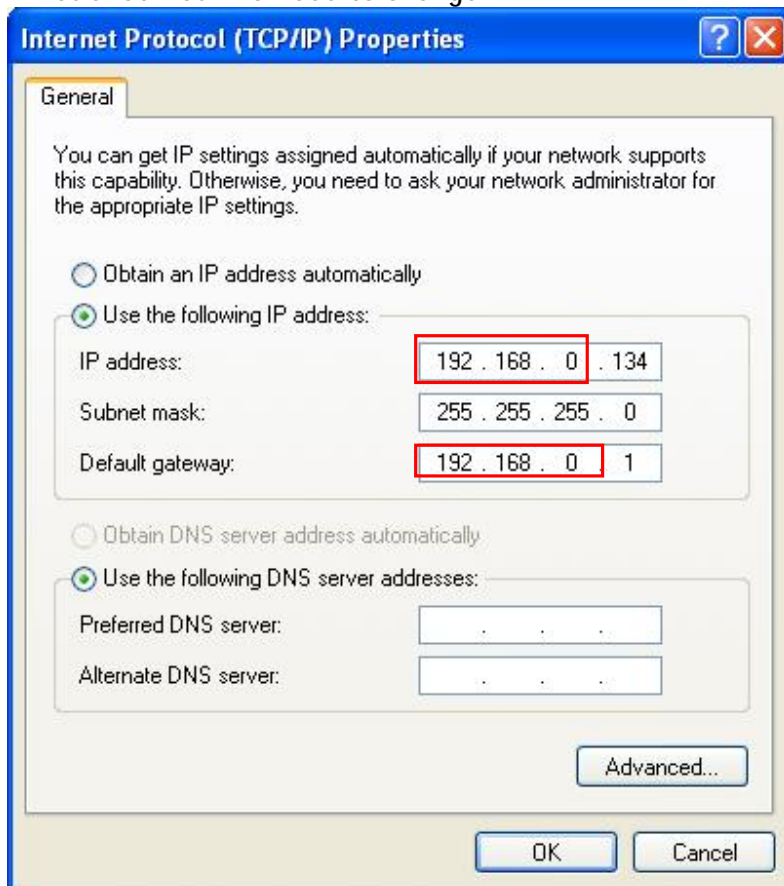
Wireless Router inside of the display

**Step 2:** Install the wireless card driver in your PC (We have already installed well) . But only Chinese Version . (step1 and step 2 can be changed as you like)

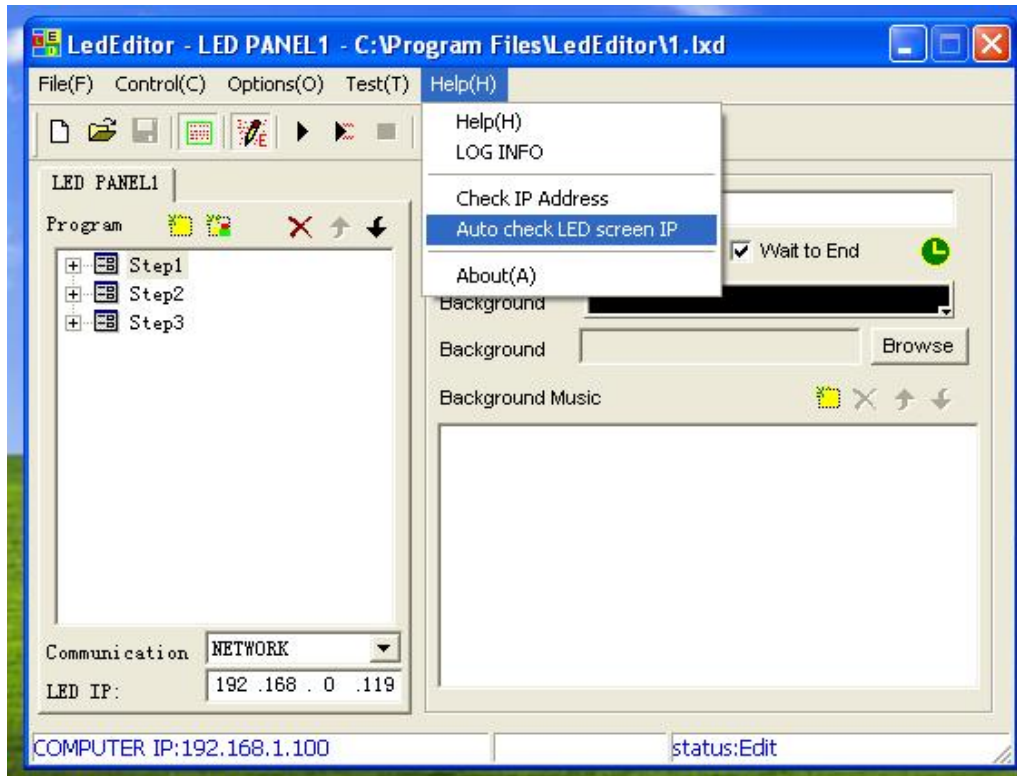
**Step3:** Set IP address of your PC

1> The first three number for IP address and Default gateway must be the same .  
The last work you can choose from 1–254 as you like .

2> Subnet mask no need to change



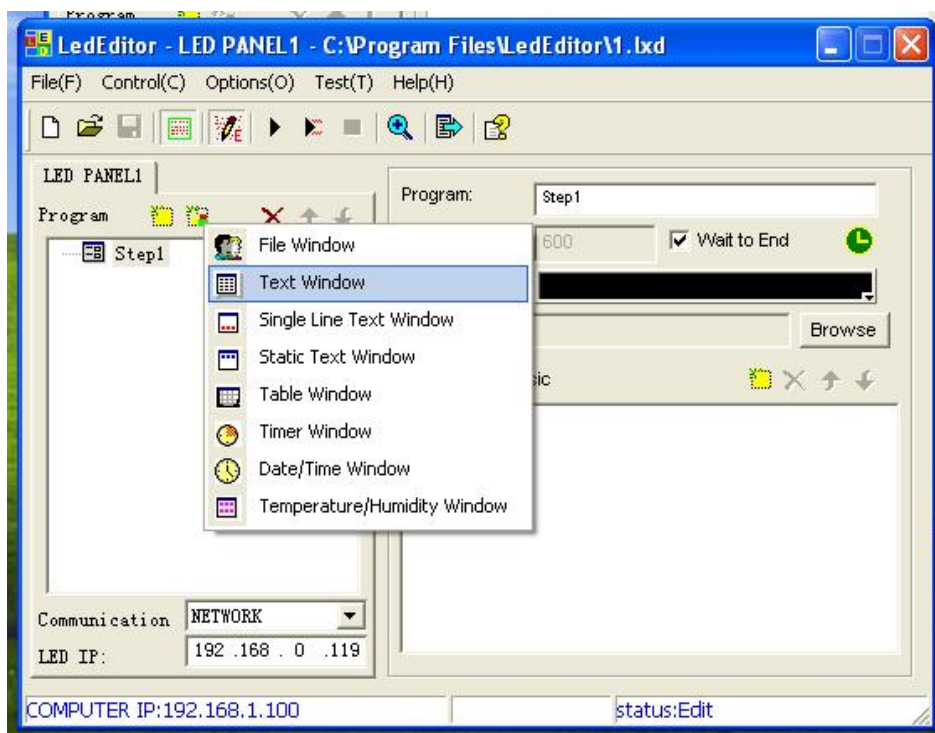
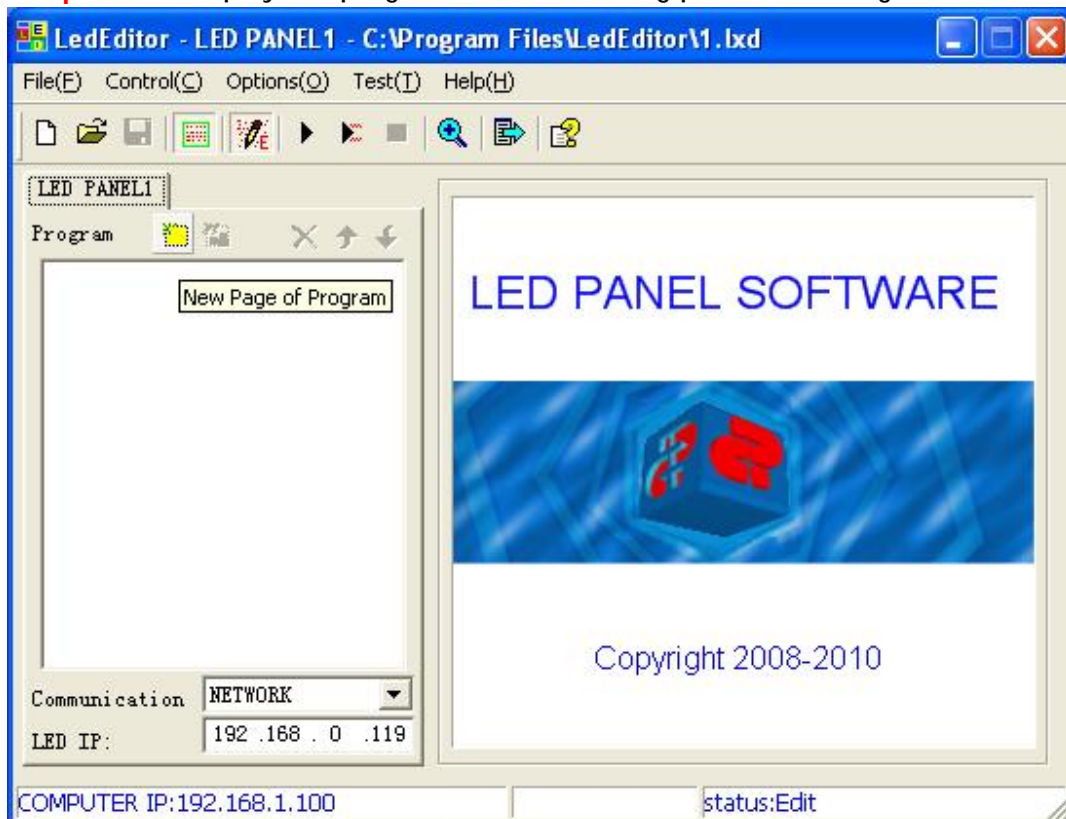
**Step4:** Search led screen IP automatically

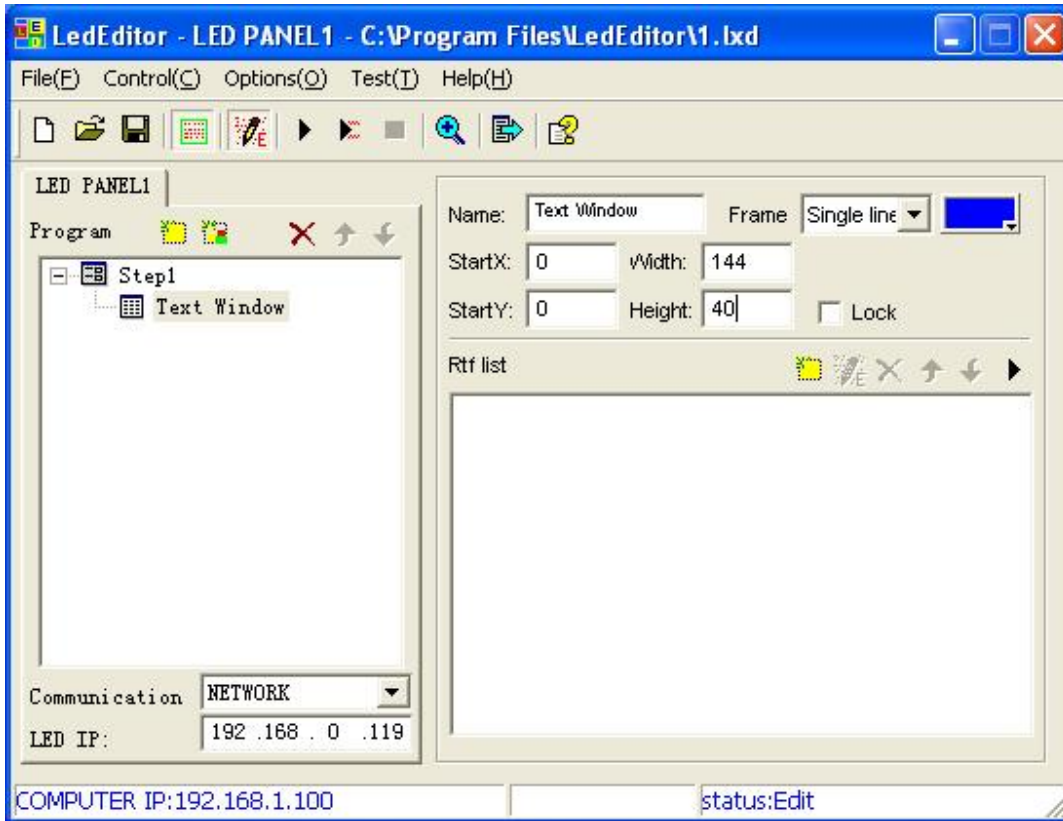


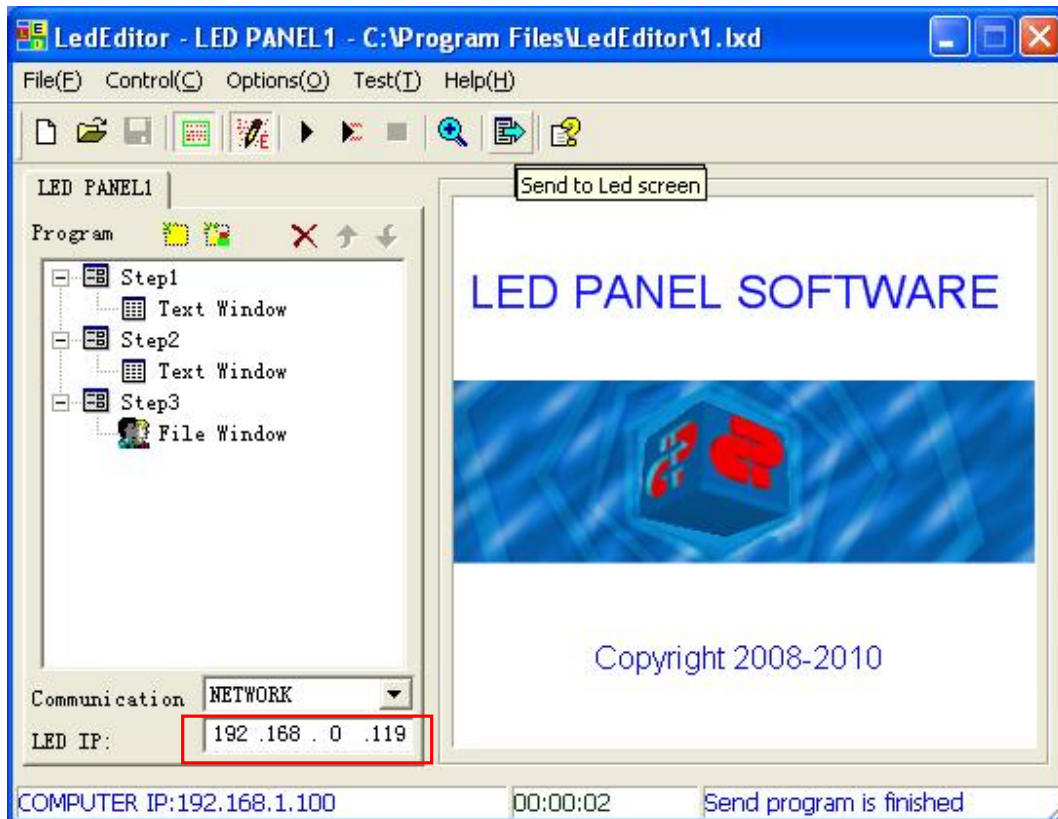
If search the screen ip successfully , then will show the window as below:



**Step5:** Then play the program as the following picture showing







Notice : The LED IP in the above picture with the red mark should be the same with the step3

**Step5:** Then you can see the message on the led screen/sign



In our factory , the sign was placed in the second floor and the computer was placed in the third floor . We made the test the signal is very well .